

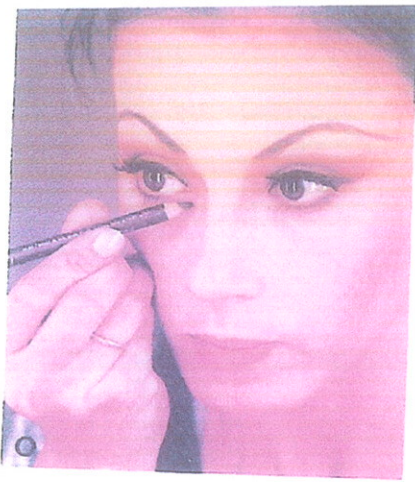
FIGURE G - 12 Makeup for Classical Ballet. Inga Loujerenko, principal dancer, Ballet Austin.

- A. Dampened bar soap used to "soap-out" the ends of eyebrows.
- B. Creme foundation applied to the face. Max Factor creme stick, med.-109. Foundation should be slightly darker and pinker than natural skin-tone.
- C. Blend foundation with a foam sponge.
- D. Apply contour at the temple, nose and under cheek bones.
- E. Blended contour and powder. Cover Girl Translucent Ivory/Beige. Powder should be one shade lighter than foundation.
- F. Apply dry blush (in the palette of the costume) to the cheek bone, tip of nose, under chin and on the lower half of ear.
- G. Apply false lashes along the lash line with Duo lash adhesive. If lashes have been used before apply immediately, if they are new let the Duo set for 30 sec., then apply. Note: the outer end of the lash sits slightly above the lashline.

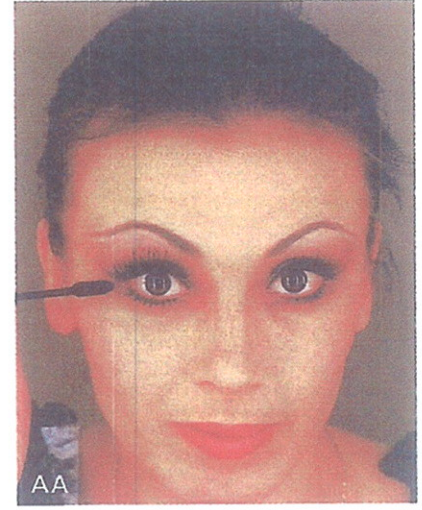


- H. Shape eyebrow with a long sweeping arch. Final half inch should be parallel to the floor. Max Factor Espresso pencil with sponge end for blending.
- I. Using a dark brown shadow, extend the crease out and up toward the end of the brow. Blend.
- J. Extend the shadow along the sides of the nose the bridge.
- K. Highlight the upper lid with pale pink eyeshadow.
- L. Place white highlight under the brow and blend down and out.
- M. Apply dark brown L'Oreal liquid eyeliner along upper lash line. Line should be very thin at the inner edge, slightly thicker at the outer edge. Do not extend past the end of the lash.
- N. Using the Espresso pencil draw in a triangle at the end of the lashline as shown.





- O, P and Q. Using the same pencil draw in a new lower lashline as shown tapering down slightly at the inner corner. Soften edge with sponge end.
- R. Apply dark blue pencil or eyeshadow at lower lashline as shown. This line should be thinner at the inner edge and slightly wider at the outer end. Contain this color directly under the eye, do not extend at either end. Blend.
- S. Deepen the crease with the brow pencil as shown. Blend up and out.
- T and U. Apply a small red dot below the tear duct as shown and blend.



- V. Apply eyeshadow (to match costume) above crease and blend up and out. Add a pale pink between the shadow and the white under brow to soften all edges.
- W. Line lips with lip pencil to match lip color. Extend the lower lip line down into the foundation at the center only to achieve a slightly fuller lower lip.
- X. Fill in lips with lip color. (Lip and cheek color should be similar.)
- Y. Apply white at the center of lower lip and blend to add dimension.
- Z. Powder all except the eyes. Intensify the cheek color.
- AA. Apply black mascara to upper and lower lashes.
- BB. Finished makeup. Ballerina, Inga Loujerenko.

