



CASTING PACKET

Nutcracker 2024

Congratulations! You have been cast in Northern Plains Dance's 2024 production of *The Nutcracker*. This packet contains information on fees, volunteering, costume, hair and makeup requirements, important dates, casting agreement, information on how to read a rehearsal schedule, and a map of the Belle Mehus. The answers to most of your production related questions can be found in this packet

FEES

To confirm your participation in this production, the casting agreement(s) and fees outlined below must be received by Thursday, September 19 at 5:00 PM.

- Each cast member is required to pay a \$85 Production Fee that covers the cost of costuming the cast member as well as the overhead costs of the production. The Production Fee is non-refundable. (if there are multiple cast members in your family, you may combine these onto one check)
 - First role fee \$85
 - Second role fee (same cast member) additional \$15 (\$90 total)
 - Third+ role fee (same cast member) additional \$10 (\$100 total)
 - In 2024, those cast as Cherubs, Cupid, Mice, Pages and Flower Fairies will pay a Production Fee of \$50.
 - Late Casting Agreements will be accepted through Friday, September 20 at 5:00PM with a \$65 late fee. After that time, no more Agreements will be accepted.
- Each family is required to complete Volunteer Hours over the course of the production period. Families who wish to earn back their Volunteer Deposits may either make a Volunteer Deposit by check **NO LATER THAN Thursday, September 19 at 5:00 PM** (there must be a separate check for each child/cast member in your family) or may choose to have their card on file run at the end of the production plus fees (this option is only available to current NPD students). NPD will hold Volunteer Deposit checks until the conclusion of the production to guarantee that each family participates in volunteer activities and cast members' costumes are well maintained. Families who want to opt-out of helping with production needs through Volunteer Hours may buy-out in the Casting Agreement. The Volunteer Deposit is structured as follows:
 - First cast member \$75 (a minimum of 3 volunteer hours)
 - Second cast member in the same family \$50 (a minimum of 2 volunteer hours)
 - Third cast member in the same family \$25 (a minimum of 1 volunteer hour)
- Volunteer hours must be completed in the order listed above to receive your Volunteer Deposit back.
- If a family does not participate in and properly report volunteer activities, or a costume is mistreated, NPD will not return the Volunteer Deposit at the conclusion of the performances.
- If a family does participate in volunteer activities, reports them correctly and costumes are well maintained, NPD will return the deposit(s) at the conclusion of the performances.
- If a cast member is removed from the production for any reason other than severe illness with doctor's note or extreme circumstances, the Volunteer Deposit and Production Fee will be forfeited.
- Dancers receiving advanced roles who are not members of the Student Company will be required to pay \$294 for required warm-up classes that are prior to rehearsals and during Production Week.



CASTING PACKET

Nutcracker 2024

REQUIRED ITEMS, PERFORMANCE ADD-ONS, AND HOW TO ORDER

Order forms for all the items listed below are available online at <http://www.northernplainsdance.org/nutcrackercast>. All order due dates are listed in Important Dates. Orders made past the due date but will be subject to a late fee.

Dancewear	Required item that <u>must</u> be ordered through NPD	See page 8 for details
Cast T-shirts	Optional add-on	See online form for details
Hair Kit	Required item that <u>can</u> be ordered through NPD	See page 7 for details
Make up Kit	Required item that <u>can</u> be ordered through NPD	See page 6 for details
Theater Bag with cast member's name	Required item that <u>can</u> be ordered through NPD	See page 7 for details
1-quart Ziploc with cast member's name & role	Required item that <u>can</u> be ordered through NPD	See page 7 for details
6-quart clear bin with cast member's name	Required item that <u>can</u> be ordered through NPD	See page 7 for details
Cast Party tickets	Optional add-on	See online form for details
Performance Video	Optional add-on	See online form for details
Cast photos	Optional add-on	See online form for details
Cast Gifts	Optional add-on	See online form for details

VOLUNTEERING

Along with the rehearsal schedule, NPD will post weekly volunteer jobs at <http://www.northernplainsdance.org/volunteer>. Follow the instructions to access your Volunteer Portal. Volunteer opportunities are varied and usually do not require previous knowledge of the activity. Typical volunteer jobs include painting props and sets, steaming costumes, ironing, embellishing costumes, minor alterations, hanging posters, and assisting in costume fittings. Credit will only be given for the time listed in the original job post (i.e. a 45-minute ironing shift will be awarded 45-minutes of volunteer time even-if the volunteer works for 50 minutes). We appreciate any additional efforts that volunteers put into complete tasks. Volunteer opportunities will be taken down each week on Friday at 5:00pm. Each time you complete a volunteer activity, return to your volunteer portal and use the "Volunteer Hours" tab to report your completed hours. You will also be able to use this portal to see which hours have been accurately reported. **If you do not show up for a volunteer activity that you have signed up for with less than 24 hours' notice, you will automatically forfeit your entire Volunteer Deposit.** If you do not record your hours by Monday, December 16, you will not receive credit for them, and your deposit will be kept. Volunteer hours are required of all cast families and compensation of any kind for additional volunteer time will not be provided.

EXCUSED VERSUS UNEXCUSED ABSENCES

Excused absences are those listed on your audition form. Any absence other than those listed on the audition form will be unexcused and will result in dismissal from the production and forfeit of all fees.

MANDATORY DATES AND COSTUME FITTINGS

Mandatory rehearsals, listed on the audition form and in the important dates below, must be attended by ALL cast members. The cast meeting must be attended by ALL cast members and a parent/guardian. Costume fittings listed in this packet are scheduled according to dates listed on the audition form to ensure that all members of the group are in attendance. Costume fitting dates are mandatory. Failure to attend any mandatory dates, including cast meeting, rehearsals and costume fittings, will result in immediate dismissal from the production and forfeit of all fees.

UNDERSTUDIES

An understudy is a person who learns another's role to be able to act as a replacement at short notice. The understudy is required to attend all scheduled rehearsals and know the parts in which they are cast. **Understudies are not to attend the costume fitting for the role that they are understudying.**



CASTING PACKET

Nutcracker 2024

BISMARCK PUBLIC SCHOOLS SIPS PROGRAM

The Nutcracker is presented annually to 2nd grade students enrolled in Bismarck Public School through the Student Instructional Program (SIPS – a little taste of the arts) which allows attendees to experience a range of fine arts activities available in the community. This program is held on Friday, December 13 during the school day. Performers (listed in the Performance Schedule on page 5) will not attend school that day. Students attending BPS will receive an excused absence.

MY FIRST NUTCRACKER PERFORMANCE

Select roles will be asked to participate in My First Nutcracker, an abbreviated public performance for young audience members on Sunday, December 15. A full list of those participating can be found on page 5 under Performance Schedule.

COMPLIMENTARY CAST TICKETS

Each cast member receives two (2) complimentary Level D tickets to the performance of their choice. If a cast member wishes to upgrade their complimentary tickets to a different price level, the cast member is required to pay the price difference. The casting agreement, production fee, and volunteer deposit are required to receive complimentary tickets. Complimentary cast tickets are available in person at NPD starting **Monday, September 23** during regular office hours only. Office hours will be listed in red on the rehearsal schedule if a staff member is available during Saturday rehearsals.

CAST PARTY

All cast members and their families (even Grandma and Grandpa who are in town just to see the performance) are invited to celebrate the close of the 2023 performances of The Nutcracker on **Sunday, December 15**. Following the performance, join NPD for dinner, drinks, dessert, and even more dancing. Tickets are available online on the photo/performance video order form due **Saturday, November 9**. Everyone attending the cast party must have a ticket. We hope you can join us! Cast Party is subject to change.

REHEARSAL TIME VERSUS CALL TIME

Up until Studio Dress Rehearsal, all the times listed on the weekly schedules are known as “rehearsal times”. Dancers are expected to be in the building, dressed, ready to dance, and waiting in the lobby prior to the start time listed on the schedule. It is the parent’s responsibility to supervise their dancers in the common areas. Starting on **Saturday, November 23**, you will notice the addition of “call times” on the schedule. This is the specific time that dancers are expected to arrive at the designated location. Once ‘call times’ appear, there is time built into the schedule for NPD’s staff and volunteers to help dancers get into costume. It is important to recognize this distinction as once “call times” appear on the schedule, NPD will provide supervision.

SECURITY PROCEDURES

NPD Studios

- Once cast members are in the building for rehearsal, they must wait quietly in the lobby until their rehearsal starts. They are to remain in their scheduled rehearsal room until released by a staff member.
- Late Clause: if a parent or guardian is late picking up their cast member from the scheduled rehearsal end time, a late fee will be assessed at \$1 per minute late and must be paid in full prior to the cast member’s next rehearsal.

Belle Mehus (see map below)

- There will be a backstage tour for new cast members and parents during production week.
- All cast members must sign in and out for all rehearsals and performances. This is how we keep track of who has entered and exited the building.
- If a parent wishes to get a message or item to one of the cast members in a dressing room, the Door Security and/or Dressing Room Attendant will take care of getting it to the appropriate person.
- NPD Staff will have a list of parents’ cell phone numbers so that they may be contacted if needed.
- At the end of rehearsals and performances at which cast members must remain in their dressing rooms, all dancers must sign out at their assigned pick-up area.
- **NO PARENTS, FAMILY MEMBERS OR GUESTS WILL BE PERMITTED IN THE DRESSING ROOMS OR DRESSING ROOM AREAS.**
- During theater rehearsals in which the cast members are not in costume (i.e., spacing); there will not be Door Security or Dressing Room Ensemble present. Parents and cast members should wait in the lower atrium until they are called for rehearsal. Parents are



CASTING PACKET

Nutcracker 2024

not permitted to watch rehearsals. Cast members and parents should exit through the front atrium door when their rehearsal is completed.

- During dress rehearsals at the theater, there will be Door Security and Dressing Room Ensemble present. Cast members are to always remain backstage. Parents are not permitted to watch dress rehearsals.
- During performances at the theater, there will be Door Security and Dressing Room Ensemble present. Cast members are to always remain backstage. Parents must have a ticket to enter the theater.
- During all rehearsals at the Belle, including dress rehearsal, the front doors of the theater are locked unless otherwise indicated. The only access into the theater is through the Performers' backstage door. Only one parent or chaperone per family is permitted at rehearsal.
- Late Clause: if a parent or guardian is late picking up their cast member from the scheduled rehearsal end time, a late fee will be assessed at \$1 per minute late and must be paid in full prior to the cast member's next rehearsal.
- Early Clause: if a parent or guardian is early dropping off their cast member from the scheduled rehearsal start time, an early fee will be assessed at \$1 per minute and must be paid in full prior to the cast member's next rehearsal.
- All cast members must check out at the assigned location
 - Monday, December 9- All cast members will check themselves out at the front atrium doors.
 - Tuesday, December 10- All cast members will check themselves out at the front atrium doors.
 - **Wednesday, December 11**
 - Check out by a parent in the upper atrium: Bees, Cherubs, Cupid, Flower Fairies, Fritz, Mice, Mouse Captain, Pages, Party Boys, Polichinelles, Rosebuds, Snowflakes
 - Check out by a parent in the lower atrium: Angels, Arabian Attendant, Arabian Ensemble, Bear, Dragon, Minstrels, Matadors, Party Girls, Clara's Friends, All Rats, Sheep, All Soldiers
 - Check out at the Performers' Entrance: Clara, Party Parents, Maids, Harlequin, Columbine, Rat King, Rats, Snow Corps, Divertissement, Flower Corps
 - **Thursday, December 12**
 - Check out by a parent in the upper atrium: Bees, Cherubs, Cupid, Flower Fairies, Fritz, Mice, Mouse Captain, Pages, Party Boys, Polichinelles, Rosebuds, Snowflakes
 - Check out by a parent in the lower atrium: Angels, Arabian Attendant, Arabian Ensemble, Bear, Dragon, Minstrels, Matadors, Party Girls, Clara's Friends, All Rats, Sheep, All Soldiers
 - Check out at Performers' Entrance: Clara, Party Parents, Maid, Butler, Harlequin, Columbine, Rat Queen, Snow Corps, Reindeer, Divertissement, Flower Corps & Finale
 - **Friday, December 13**
 - **Lecture Demonstration** - All cast members will check themselves out at the Performers' Entrance
 - **Performance**
 - Check out by a parent in the upper atrium: Bees, Cherubs, Cupid, Flower Fairies, Fritz, Mice, Mouse Captain, Pages, Party Boys, Polichinelles, Rosebuds, Snowflakes
 - Check out by a parent in the lower atrium: Angels, Arabian Attendant, Arabian Ensemble, Bear, Dragon, Minstrels, Matadors, Party Girls, Clara's Friends, All Rats, Sheep, All Soldiers
 - Check out at Stage Right Box Seats: Clara, Party Parents, Maid, Butler, Harlequin, Columbine, Rat Queen, Snow Corps, Reindeer, Divertissement, Flower Corps & Finale
 - **Saturday, December 14 & Sunday, December 15**
 - Check out by a parent in the upper atrium: Bees, Cherubs, Cupid, Flower Fairies, Fritz, Mice, Mouse Captain, Pages, Party Boys, Polichinelles, Rosebuds, Snowflakes
 - Check out by a parent in the lower atrium: Angels, Arabian Attendant, Arabian Ensemble, Bear, Dragon, Minstrels, Matadors, Party Girls, Clara's Friends, All Rats, Sheep, All Soldiers
 - Check out at the Stage Right Box Seats: Clara, Party Parents, Maid, Butler, Harlequin, Columbine, Rat Queen, Snow Corps, Reindeer, Divertissement, Flower Corps & Finale



CASTING PACKET

Nutcracker 2024

IMPORTANT DATES

DATE	ACTIVITY	TIME
Thursday, September 19	All Cast Paperwork and Fees due	By 5:30
Saturday, September 21	Mandatory Polichinelles Costume Fitting	see schedule for times
Saturday, September 21	Mandatory Chinese Dragon Costume Fitting	see schedule for times
Monday, September 23	Cast Comp tickets available in the office	see schedule for times
Thursday, September 26	Mandatory Flower Corps, Soloists, Dew Drop Costume Fitting	see schedule for times
Saturday, September 28	Mandatory Angel Costume Fitting	see schedule for times
Saturday, September 28	Mandatory Soldier & Bear Costume Fitting	see schedule for times
Saturday, September 28	Mandatory Reindeer Costume Fitting	see schedule for times
Sunday, September 29	Advanced Role Choreography Day	see schedule for times
Thursday, October 3	Mandatory Harlequin/Columbine Costume Fitting	see schedule for times
Saturday, October 5	Mandatory Fritz & Party Boy Costume Fitting	see schedule for times
Saturday, October 5	Mandatory Rat & Baby Rat Costume Fitting	see schedule for times
Saturday, October 12	Dancewear & Cast T-shirt Order Due	By 6:00
Saturday, October 12	Cast Members with a \$50 Production Fee will start rehearsal	
Saturday, October 12	Mandatory Clara, Party Girl & Clara's Friends Costume Fitting	see schedule for times
Saturday, October 12	Mandatory Bees Costume Fitting	see schedule for times
Saturday, October 12	Mandatory Page Costume Fitting	see schedule for times
Saturday, October 12	Mandatory Minstrels Costume Fitting	see schedule for times
Saturday, October 12	Mandatory Mice Costume Fitting	see schedule for times
Thursday, October 17	Mandatory Flower Finale Costume Fitting	see schedule for times
Thursday, October 17	Mandatory Arabian Ensemble & Attendant Costume Fitting	see schedule for times
Thursday, October 24	Mandatory Russian Trepak Costume Fitting	see schedule for times
Thursday, October 24	Mandatory Snow Corps Costume Fitting	see schedule for times
Thursday, October 24	Mandatory Sheep Costume Fitting	see schedule for times
Thursday, October 24	Mandatory Chinese Tea Costume Fitting	see schedule for times
Saturday, October 26	Mandatory Cherub & Cupid Costume Fitting	see schedule for times
Saturday, October 26	Mandatory Snowflake Costume Fitting	see schedule for times
Saturday, October 26	Mandatory Matadors Costume Fitting	see schedule for times
Saturday, November 2	Mandatory Rosebuds Costume Fitting	see schedule for times
Saturday, November 2	Mandatory Flower Fairy Costume Fitting	see schedule for times
Saturday, November 2	Makeup and hair lesson <i>*Must have hair/makeup kits with you</i>	see schedule for times
Saturday, November 2	Mandatory Cast Meeting & Mandatory Rehearsal	see schedule for times
Saturday, November 9	PERFORMANCE VIDEO & Photo orders due	By 6:00
Saturday, November 9	Cast Party Reservations Due	By 6:00
Saturday, November 23	Studio Dress Rehearsal	see schedule for times
Saturday, November 23	Cast Pictures	see schedule for times
Thursday, November 28	Thanksgiving – NO REHEARSAL	see schedule for times
Saturday, November 30	Thanksgiving – NO REHEARSAL	see schedule for times
Saturday, December 7	Mandatory Full Run-through Rehearsal	see schedule for times
Sunday, December 8	Move-in to the Belle Mehus Auditorium	see schedule for times
December 9-15	Production Week – No absences allowed	see schedule for times
Friday, December 13	Bismarck Public Schools SIPS (see Performance Schedule for cast list)	see schedule for times
Monday, December 16	Volunteer Hours Due	



CASTING PACKET

Nutcracker 2024

PERFORMANCE SCHEDULE

Bismarck Public Schools SIPS	Friday, December 13	10:00am & 1:00pm	Clara, Snow Corps, Icicles, Snow Queen, Chinese Tea, Russian, Mirliton, Sheep, Flower Corps & Soloists, Dew Drop Fairy, Polichinelles
Public Performance #1	Friday, December 13	7:00pm	CAST A
Public Performance #2	Saturday, December 14	2:00pm	CAST A
Public Performance #3	Saturday, December 14	7:00pm	CAST B
Public Performance #4 [MY FIRST NUTCRACKER PERFORMANCE]	Sunday, December 15	12:30PM	Clara, Fritz, Party Girls, Clara's Friends, Party Boys, Party Parents, Maid, Butler, Drosselmeyer, Harlequin, Columbine, Rats, Rat Queen, Nutcracker, Soliders, Bear, Snow Corps, Icicles, Snow Queen, Reindeer, Angels, Spanish, Chinese, Russian, Mirliton, Sheep, Mother Ginger, Polichinelles, Arabian Coffee, Flower Corps, Dew Drop Fairy, Flower Soloists, Sugar
Public Performance #5	Sunday, December 15	4:00pm	CAST B

**Additional performances/outreach opportunities may arise, please see posted weekly schedule*

SCENE BY SCENE BREAKDOWN

Act 1		
Scene 1	Party Scene	Party Parents, Maid, Clara, Fritz, Party Girls, Clara's Friends, Party Boys, Dolls, Drosselmeyer
Scene 2	Battle Scene	Soldiers, Bear, Mice, Mouse Captain, Rats, Baby Rat, Rat Queen, Nutcracker, Clara, Drosselmeyer
Scene 3	Snow Scene	Snow Corps, Snowflakes, Clara, Drosselmeyer, Snow Queen, Reindeer, Nutcracker
Act 2		
Scene 1	Opening of Act II	Angels, Cherubs, Cupid, Drosselmeyer, Nutcracker, Clara
Scene 2	Entrance to the Kingdom of the Sweets	Sugar Plum, Clara, Rosebuds, Pages, Minstrels, Spanish, Chinese Tea, Lead Arabian Coffee, Russian, Mirliton, Dew Drop, Cavalier
Scene 3	Divertissement	Spanish, Matadors, Chinese Tea, Chinese Dragon, Arabian Coffee, Arabian Corps, Arabian Ensemble, Minstrels, Russian, Mirliton, Sheep, Polichinelles, Clara
Scene 4	Waltz of the Flowers	Dew Drop Fairy, Flower Corps, Flower Soloists, Bees, Flower Fairies, Clara
Scene 5	Finale	Spanish, Chinese Tea, Arabian Coffee, Russian, Mirliton, Sheep, Polichinelles, Flower Finale, Sugar Plum, Clara, Nutcracker
MATINEE BOWS		Entire Cast
EVENING BOWS		Clara, Fritz, Party Girls, Party Boys, Clara's Friends, Soldiers, All Rats, Rat Queen, Bear, Snow Queen, Angels, Spanish, Matadors, Chinese Tea, Chinese Dragon, Arabian Coffee, Arabian Attendants, Arabian Ensemble, Russian, Mirliton, Sheep, Polichinelles, Flower Corps & Flower Finale, Dew Drop Fairy, Nutcracker, Sugar Plum Fairy, Drosselmeyer,



CASTING PACKET

Nutcracker 2024

COSTUME REQUIREMENTS

Any cast member not wearing the correct undergarments and shoes will not be allowed on stage – this includes the absence of regular underwear. All performance undergarments and shoes must be in good repair (i.e. no holes in tights, shoes clean, sewn and with drawstrings intact) and be purchased through NPD. There is no jewelry allowed on stage unless provided by NPD. There is no nail polish allowed. ***Some roles require a pair of shoes to be turned in at the costume fitting to be painted. You may purchase used shoes (limited stock) if available by speaking to a staff member. *NPD offers resale skin-tone leotards that fulfill the costume requirement. If you would like to check on available sizes, please visit with a staff member.**

Eyeglasses are not permitted on stage or for Studio Dress Rehearsal. NPD Staff suggests that children who require glasses do not wear them to any rehearsal to get used to dancing without them.

Underwear is not to be worn under tights and leotards. This rule is not specific to performance but will be strongly enforced during Studio Dress and performances.

Hair is to be a natural color for all in-costume run-throughs including Studio Dress Rehearsal, Theater Dress Rehearsals and Performances.

Dancers are expected to perform as they appeared during the audition. Cast members are not to make any drastic changes to their outward appearance (ex. hair color/length) after auditioning. Female cast members whose hair is chin length or shorter are asked to refrain from cutting or trimming their hair until after the performances. Before making any changes to your appearance, talk to the Director.

MAKEUP

Each cast member is required to have their own makeup kit that contains the following items. These can be purchased through NPD via the Dancewear order form found at www.northernplainsdance.org/nutcrackercast (NPD makeup kits do not include foundation/base or black mascara). If you wish to purchase your own items, all makeup should be matte. Makeup with shimmer does not show up under stage lights. There is no body or hair glitter permitted on stage.



Makeup Kits

- Foundation/Base*
- 1 shade darker than actual skin tone
- Loose Translucent Powder
- Pink Blush
- Red Lipstick
- Brown Eyeshadow
- Light Taupe Eyeshadow
- Black Mascara*

**not included in NPD Makeup kits*

***All items must be purchased and brought to the Hair and Makeup Lesson Saturday,**

Pointe Role Makeup Kits

- Foundation/Base*
- 1 shade darker than actual skin tone
- Loose Translucent Powder
- Pink Blush
- Red Lipstick
- Brown Eyeshadow
- Black Mascara*
- White Eyeshadow & White Eye Pencil
- Black Eye Pencil
- Fake Eyelashes & Eyelash Glue
- Pencil Sharpener

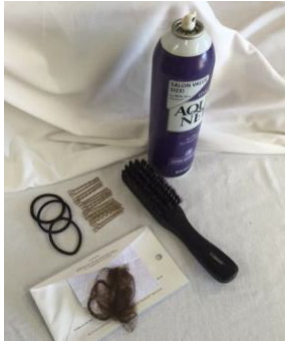


CASTING PACKET

Nutcracker 2024

HAIR

Each cast member is required have their own hair kit that contains the following items. These can be purchased through NPD via the Dancewear order form at www.northernplainsdance.org/nutcrackercast. Hair style requirements for each role are listed below. No additional decorations are permitted.



Female Hair Kits

Soft Bristled Brush
Hair Spray
Hair Gel
Hair Elastic the matches hair color
Hair Net the matches hair color
(if required to have a bun)
Bobby Pins

**All items must be purchased and brought to the Hair and Makeup Lesson on Saturday, November 2*

Male Hair Kits

Soft Bristled Brush
Hair Spray

BAGS

Each cast member is required to provide:

1. A **1-quart Ziploc bag** containing their red performance lipstick and, if female, 20-25 bobby pins. This bag will be turned in at the front desk at check in for Studio Dress Rehearsal and will remain in NPD's possession for the run of performances. Each cast member must have their own bag, their own lipstick, and their own bobby pins. Siblings may not share.
2. A **6-quart bin** clearly marked with their name to keep their items organized at the theater. The bin will be turned in at check in for Studio Dress Rehearsal and will remain in NPD's possession for the run of performances. Siblings may not share.
3. A **theater bag** that zips or buckles shut. When your child arrives at the theater, they will put their street clothes in this bag and immediately put on their ballet shoes. When they change out of costume, their ballet shoes will go back into the bag.



CASTING PACKET

Nutcracker 2024

ROLE <i>*Items that must be purchased through NPD</i>	UNDERGARMENTS	LEGS	SHOES	Provided by NPD	HAIR STYLE	SPECIAL INSTRUCTIONS
Clara, Party Girls	Skin-tone leotard*	Pink Tights*	Pink Ballet Shoes*		Half up, curled in ringlets	attend hair workshop
Clara's Friends	Skin-tone leotard*	Pink Tights*	Pink Pointe Shoes*		Half up, curled in ringlets	attend hair workshop
Party Mothers, Maid	Skin-tone undergarments		Black Character Shoes	Jewelry	Period Specific	See Hollis
Fritz, Party Boys, Male Pages	Dance belt*		Black ballet shoes w/ white elastic*	White Tights	Trimmed and combed	
Party Fathers	Subtle colors	Black Dress Socks	Black Jazz Shoes		Trimmed and combed	
Harlequin	Skin-tone leotard*	n/a	n/a	White ballet shoes, White Tights	Low Bun with Hairnet	attend hair workshop
Columbine	Skin-tone leotard*, pink trunks*	Pink Tights*	Pink Pointe Shoes*		High Bun with Hairnet	attend hair workshop
Snowflakes	Skin-tone leotard*	Pink Tights*	Pink Ballet Shoes*		High Bun with Hairnet	attend hair workshop
Snow Corps	Skin-tone leotard*, pink trunks*	Pink Tights*	Pink Ballet Shoes*		High Bun with Hairnet	Rhinestone Earrings*
Reindeer	Skin-tone leotard*, pink trunks*	Pink Tights*	Pink Pointe Shoes*		High Bun with Hairnet	Rhinestone Earrings*
Soldiers, Matador	Skin-tone leotard*	Pink Tights*	n/a	Black Ballet Shoes	Low Bun with Hairnet	attend hair workshop
Rats, Baby Rat	Skin-tone leotard*	Pink Tights*	n/a		Low Bun with Hairnet	attend hair workshop
Rat Queen	Skin-tone leotard*	n/a	Pink Pointe Shoes (painted)*		Low Bun with Hairnet	attend hair workshop
Mice, Bear, Mouse Captain	Skin-tone leotard*	Pink Tights*	Pink Ballet Shoes*		High Bun with Hairnet	attend hair workshop
Angels	Skin-tone leotard*, pink trunks*	Pink Tights*	Pink Pointe Shoes*		High Bun with Hairnet	attend hair workshop
Cupid	Dance belt*	n/a	n/a	n/a	Trimmed and combed	
Cherubs	Skin-tone leotard*	Pink Tights*	Pink Ballet Shoes*		Half up	attend hair workshop
Spanish	Skin-tone leotard*, Pink	Pink Tights*	Pink Pointe Shoes*		High Bun with Hairnet	Rhinestone Earrings*
Arabian Coffee	Skin-tone leotard*, Pink Trunks*	Pink Tights*	Pink Ballet Shoes to be dyed		High Bun with Hairnet	Rhinestone Earrings*
Chinese Dragon, Arabian Coffee Ensemble, Arabian Coffee Attendants, Minstrels	Skin-tone leotard*	Pink Tights*	Pink Ballet Shoes*		High Bun with Hairnet	attend hair workshop
Female Pages	Skin-tone leotard*			Black ballet shoes, White Tights	Low Bun with Hairnet	attend hair workshop
Rosebuds, Bees	Skin-tone leotard*	Pink Tights*	Pink Ballet Shoes*		High Bun with Hairnet	attend hair workshop
Chinese Tea	Skin-tone leotard*	Pink Tights*	Pink Pointe Shoes*		High Bun with Hairnet	Rhinestone Earrings*
Russian Trepak	Skin-tone leotard*, Pink Trunks*	Pink Tights*	Canvas Shoes to be dyed		High Bun with Hairnet	Rhinestone Earrings*
Mirliton	Skin-tone leotard*, Pink Trunks*	Pink Tights*	Pink Ballet Shoes*		High Bun with Hairnet	Rhinestone Earrings*
Sheep	Skin-tone leotard*	Black Tights*	n/a	Black Ballet Shoes	Low Bun with Hairnet	attend hair workshop
Polichinelles	Skin-tone leotard*	Pink Tights*	Pink Ballet Shoes*		Low Bun with Hairnet	attend hair workshop
Flower Corps, Flower Soloists, Dew Drop Fairy, Flower Finale	Skin-tone leotard*, pink trunks*	Pink Tights*	Pink Pointe Shoes Pancaked*		High Bun with Hairnet	Rhinestone Earrings*
Flower Fairies	Skin-tone leotard*	Pink Tights*	Pink Ballet Shoes*		Half up	attend hair workshop

**Items that must be purchased through NPD.*

****canvas shoes to be dyed must be turned in at mandatory costume fitting**



CASTING PACKET

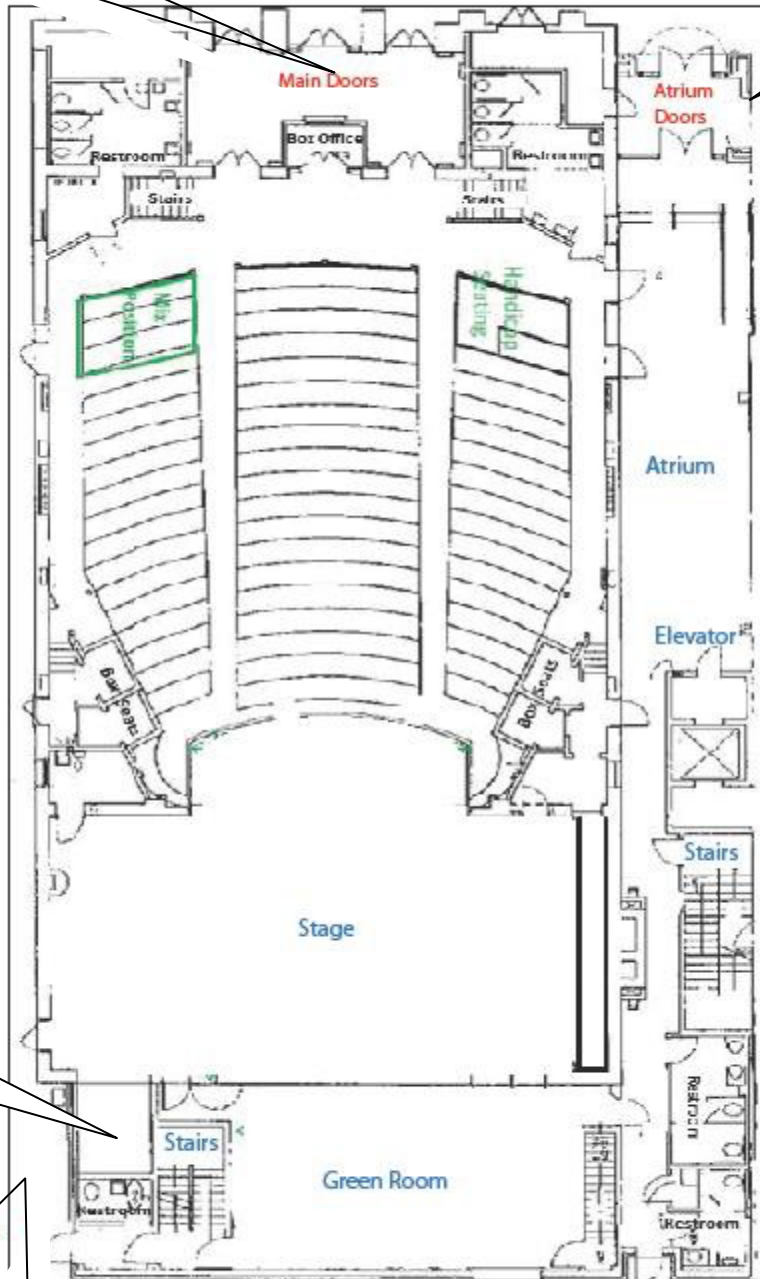
Nutcracker 2024

The ornate doors closest to the corner of Broadway will remain locked during rehearsals. On performance days this is how you can get to the box office.

The all-glass doors on 6th is where you will always exit the building.

Broadway Avenue

6th Street



The lobbies at the Belle are on the side of the theater. The Upper Atrium is directly above and has access to the balcony seating.

If your pick up is in the upper atrium, use these stairs or the elevator to get upstairs.

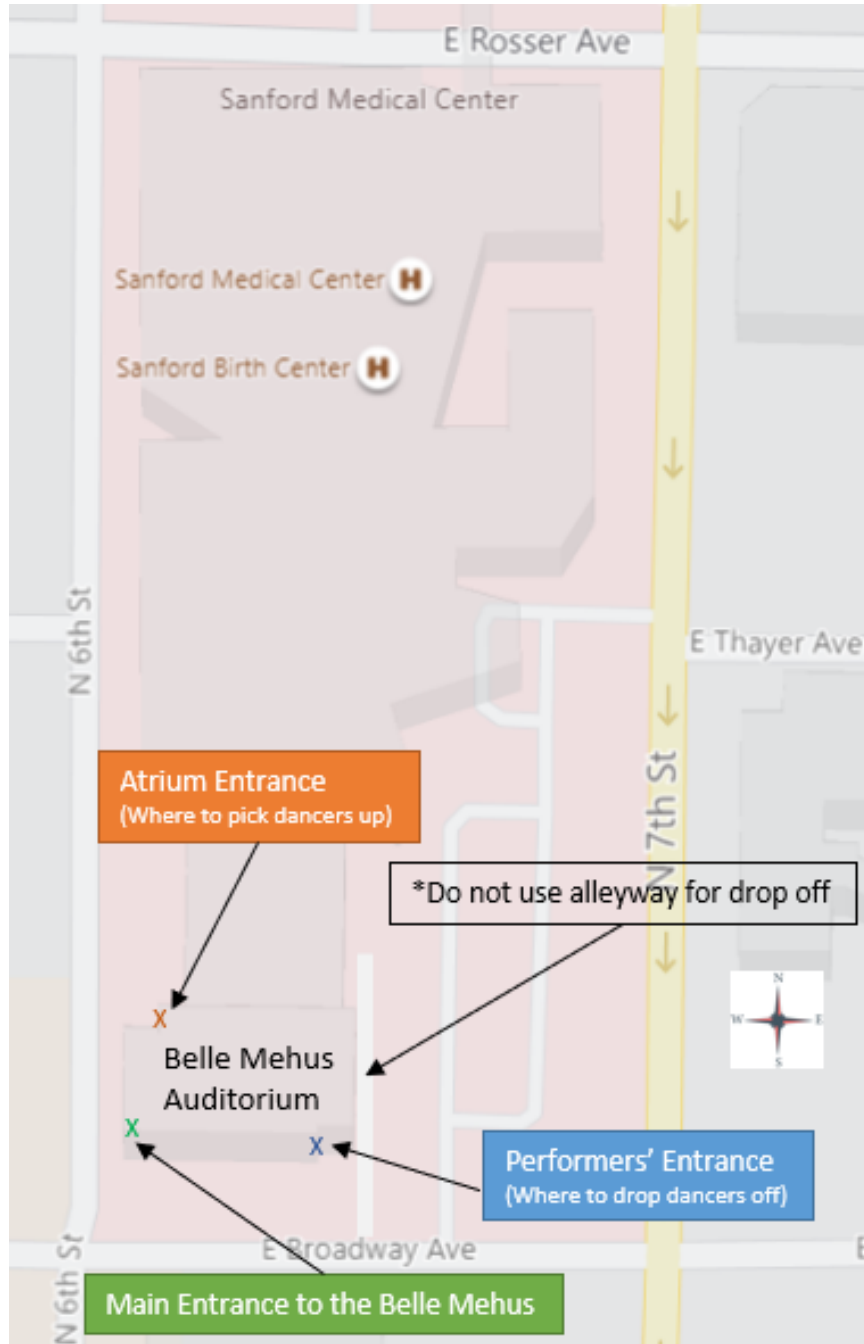
These stairs lead to the dressing rooms. Parents and guests are not allowed up.

The Performers Entrance on Broadway Ave is where you will always drop off your cast member. The sign in sheet is located directly inside this door.



CASTING PACKET

Nutcracker 2024





CASTING PACKET

Nutcracker 2024

HOW TO READ THE REHEARSAL SCHEDULE

If you have questions on how to read this schedule, please ask a staff member for assistance.

This is the day of the week/ date. Note that Monday – Wednesday is on the left, Thursday - Saturday on the right, and Sunday across the bottom.

This is the time of rehearsal. Your dancer should be ready to go by then.

REHEARSAL SCHEDULE October 12 - October 18

This is how it is the specifics for costume fittings are listed. It will be highlighted in yellow.

This is the studio where the rehearsal will take place.

This is how it is indicated whether the office is open or something is due on a Saturday. It will be highlighted in red.

This (**in bold**) is the scene that is being rehearsed. Please refer to the Scene by Scene listing in your casting packet to find out what your child is involved in.

This is who will direct the rehearsal.

Under the Scene are the people called to the rehearsal. In this case, the Battle Scene is being rehearsed and only the Nutcracker, Clara, Soldiers and Bear need to attend this rehearsal.

Anyone else involved in this scene does not need to be there.

Monday, October 12	Thursday, October 15
	5:45 - 6:30 Snow Scene Snow Corps, Clara, Drosselmeyer Studio 1 HMH
	6:30 - 7:00 Mandatory Costume Fitting Snow Corps, Harlequin, Columbine Studio 1 HMH
	6:45 - 7:15 Divertissement Russian Studio 1 HMH
Tuesday, October 13	Friday, October 16
	Saturday, October 17
	10:45 - 11:45 Warm Up Class Advanced Roles & Student Company Studio 1 NL
	Dancewear & Cast T-shirt Order Due by 6:00 PM
	11:45 - 12:30 Opening of Act II Sugar Plum Fairy, Spanish, Lead Arabian, Demi-Soloist Arabian, Chinese, Russian, Mirliton, Dew Drop Fairy, Clara, Nutcracker Studio 1 HMH
	12:30 - 1:15 Divertissement Lead Arabian, Demi-Soloist Arabian Studio 1 HMH
	1:00 - 1:30 Battle Scene Mice Studio 2 KH
	1:30 - 1:45 Mandatory Costume Fitting Mice, Bear Studio 3 KH
	2:30 - 3:30 Battle Scene Nutcracker, Clara, All Soliders, Bear Studio 1 KH
	4:00 - 4:30 Battle Scene Rat King, & Rats Group 1 Studio 2 KH
	4:00 - 4:30 Party Scene Clara, Clara's Friends, Party Girls, Party Bc Studio 3 NL
	5:15 - 6:00 Opening of Act II Angels Studio 2 KH
Sunday, October 18	